

# Sicco - *Liss collection*

L'Agence d'Isabelle  
- *design by Ombre*







### **Concept.**

This table lamp is inspired by the lightness of a drying paper leaf. Like a page delicately placed on its stand, the light reveals the handcrafted material, meticulously shaped by french ateliers.

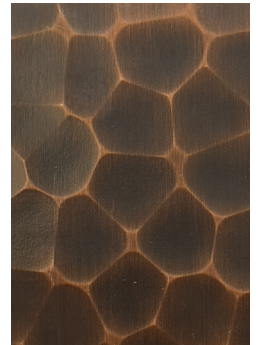




*Straw marquetry*



*Engraved paper*



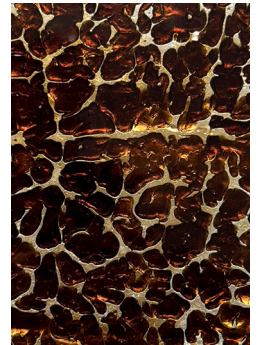
*Textured copper*



*Leather*



*Heliogravure copper*



*Coating*

### **Custom-made.**

L'Agence d'Isabelle offers customization of the Sicco lamp, with a wide range of materials and special finishes, allowing it to perfectly complement each interior design project. You will find several proposals above, ready to be developed.



**Materials.**

Base : Patinated brass

Shade : Parchemin paper

Elect. Cable : Black Fabric Braided Cable, 2 Core Twisted.  
(other colors available)

**Dimensions (with shade) and Weight.**

H51xW37xD24cm / H20''xW14.5''xD9.5''

2.9 kg / 6.4lbs

Elect. Cable: 1.80m / 70''

**Lighting Specifications.**

Socket : E27 LED bulb (included)

Watts : 9W LED

Kelvin : 2700

**Ratings.**

Class II

CE

IP20

**Downloads** (please send us an email)

Tear sheet

3D files

CAD 2D files



**Contact.**

Isabelle de Lasteyrie  
[contact@lagencedisabelle.com](mailto:contact@lagencedisabelle.com)  
+33 6 20 34 77 01

Instagram : @agence\_disabelle

